

# French Creek State Park

Hopewell Lake Course / Elverson, Chester County, Pennsylvania



Delaware Valley Orienteering Association

14 Lake Drive, Spring City, PA 19475  
 frankdvoa@aol.com, 610.792.0502  
 www.dvoa.org

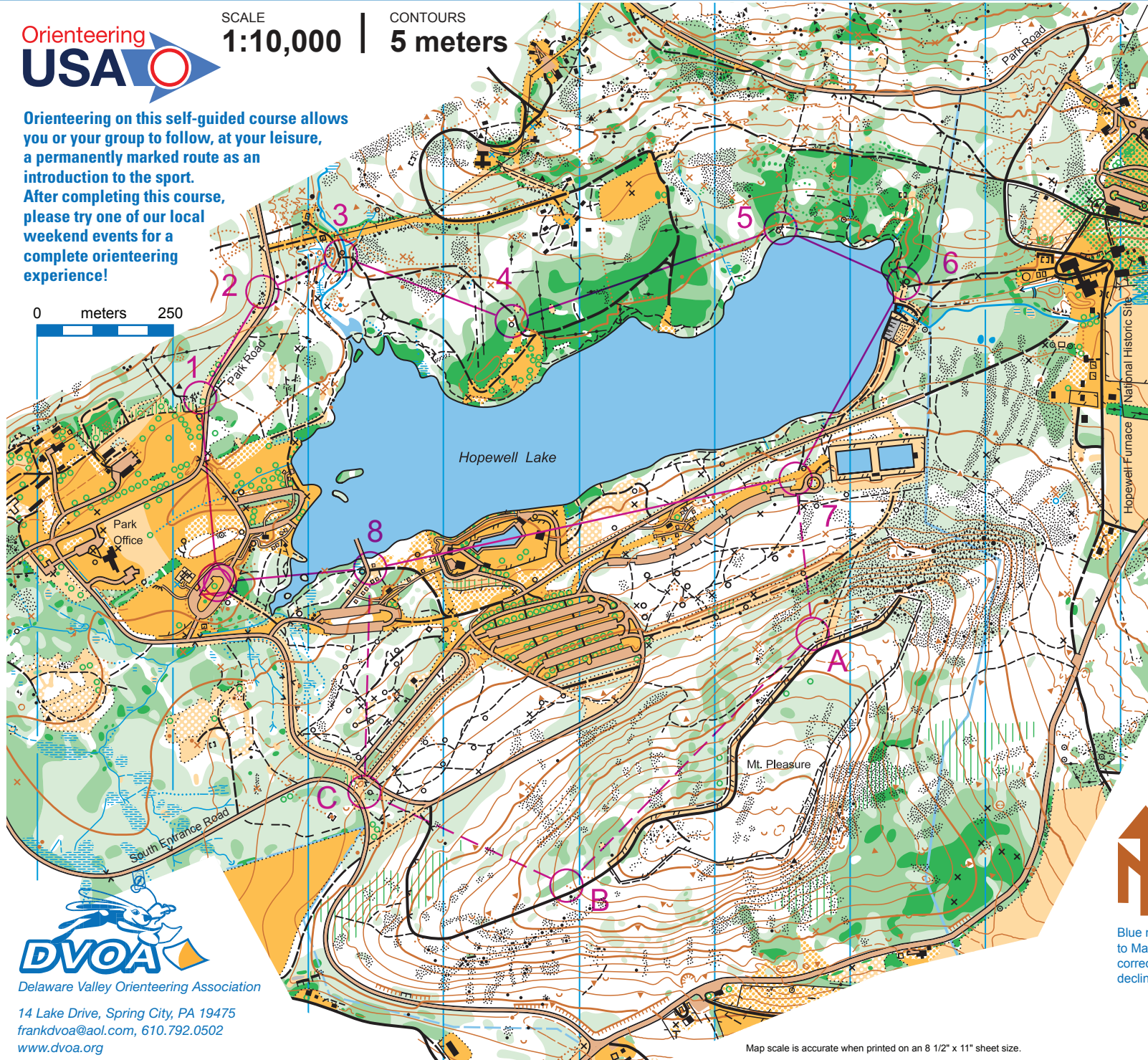


SCALE  
**1:10,000**

CONTOURS  
**5 meters**

Orienteering on this self-guided course allows you or your group to follow, at your leisure, a permanently marked route as an introduction to the sport. After completing this course, please try one of our local weekend events for a complete orienteering experience!

0 meters 250



Blue meridian lines point to Magnetic North. No correction required for declination.

Map scale is accurate when printed on an 8 1/2" x 11" sheet size.

French Creek Central  
 Photogrammetry, 1999; Olaf Helgesen  
 Field Survey, 1999; Eric Weyman, Ed Scott; 2012; Ed Scott  
 Cartography, 1999; J-J Cote, Pat Dunlavey  
 Fieldwork & Drafting, 2011; Vladimir Zherdev  
 Course Design, 2001; Ed Scott, Matt Marcink  
 Brochure Design & Production, 2015; Bob Agosta

© Copyright 1995 - 2012, Delaware Valley Orienteering Association (DVOA). All rights reserved. This map is an original work produced from aerial and field surveys and may only be reproduced for use on this permanent orienteering course. Portions of the land depicted may be private, and possession of this map does not imply right of access. Please respect the rights of landowners.

# French Creek State Park

Hopewell Lake Course / Elverson, Chester County, Pennsylvania



French Creek / Hopewell Lake Course Permanent Orienteering Course Control Sheet					
Short Course		3.1 km distance (1.93 miles)		40m climb (130 feet)	
Control # / Letter Code		Control Descriptions		Control Descriptions (Text)	
▷		⊙		Start Triangle Clearing	
1		⋯		Vegetation Boundary	
2		↑	▲	○	Northern Boulder, 1.0 m high, North Side
3		/	/	Y	Trail Junction
4		⊂	⊃	○	Depression, Shallow, South Side
5		/	/	Y	Trail Junction
6		⊙		○	Clearing, North Edge
7		⋯		○	Vegetation Boundary, Northeast Edge
8		/	/	Y	Trail - Road Junction
⊙		336m (1,100 feet) to Finish		⊙	

French Creek / Hopewell Lake Course Permanent Orienteering Course Control Sheet						
Long Course		4.3 km distance (2.67 miles)		105m climb (344 feet)		
Control # / Letter Code		Control Descriptions		Control Descriptions (Text)		
▷		⊙		Start Triangle Clearing		
1		⋯		Vegetation Boundary		
2		↑	▲	1.0	○	Northern Boulder, 1.0 m high, North Side
3		/	/	Y		Trail Junction
4		⊂	⊃		○	Depression, Shallow, South Side
5		/	/	Y		Trail Junction
6		⊙			○	Clearing, North Edge
7		⋯			○	Vegetation Boundary, Northeast Edge
A			▲	0.8	○	Boulder, 0.8 m high, West Side
B		⋯			↙	Ditch, Northwest End
C		⋯			○	Vegetation Boundary, Southwest Edge
8		/	/	Y		Trail / Road Junction
⊙		336m (1,100 feet) to Finish		⊙		

To check control letter codes, go to:

[www.dvoa.org/learn/perm](http://www.dvoa.org/learn/perm) and select the course you have completed; or mail a copy of your noted course control sheet to: DVOA, 14 Lake Drive, Spring City, PA 19475.

Please include your phone, email, or mailing address for a reply.

### LEGEND

- paved road
  - pavement, gravel
  - dirt road
  - vehicle trail
  - large foot path
  - small foot path
  - indistinct path
  - narrow ride
  - stone wall
  - ruined stone wall
  - fence
  - ruined fence
  - uncrossable fence
  - power line
  - building
  - ruin
  - hunter's stand, tower
  - cairn, rocky pit
  - boulder: small, large
  - passable cliff
  - impassable cliff
  - boulder field, stony ground
  - junk\*, fireplace\*, misc object\*
  - contours, form line
  - gully, dry ditch
  - small knoll, depression
  - pit, broken ground
  - earth bank
  - earth wall
  - ruined earth wall
  - rootstock\*, charcoal terrace\*
  - stream: wide, small
  - small pond
  - spring, waterhole, well
  - lake, uncrossable river
  - intermittent stream
  - narrow marsh
  - marsh, diffuse marsh
  - open land, rough open
  - open with scattered trees
  - rough open with scattered trees
  - vegetation: forest, slow run
  - vegetation: walk, fight
  - undergrowth: slow run, walk
  - distinct vegetation boundary
  - cultivated land, settlement
  - distinct tree
  - Hopewell Furnace boundary\*
  - boundary of state lands\*
- \* not an IOF symbol

Name \_\_\_\_\_

Mailing Address \_\_\_\_\_

Email \_\_\_\_\_

Date Course Completed \_\_\_\_\_

Phone \_\_\_\_\_

End Time: \_\_\_\_\_

Start Time: \_\_\_\_\_

**After completing this course, please try one of our local weekend events for a complete orienteering experience!**



14 Lake Drive  
Spring City, PA 19475  
frankdvoa@aol.com  
610.792.0502  
www.dvoa.org

## ORIENTEERING - What is it?

Orienteering is a sport of Scandinavian origin. The game's objective is to locate fairly easy-to-find markers in the woods with the aid of a map and, if you like, a compass. The challenge of orienteering results from participants' not knowing ahead of time the markers' locations. The test lies in determining the best routes between these locations and, in the sport's competitive form, in finding all these points (called controls) in the least possible time. At its best, not only does orienteering improve your knowledge of geography and practical navigation, it enhances physical and mental fitness as well.

Orienteering is a sport for people of all ages, abilities, and gender. Participants can travel alone or in groups, running or strolling, to win the contest or merely to savor nature's beauty, which, as any orienteer will attest, is winning itself. The sport provides excellent family fare.



## INFORMATION

This map was produced with the cooperation of and assistance from Hopewell Furnace NHS, French Creek SP, and Park Superintendent, Randy Frey. Partial funding was provided by the National Park Service.

For more information contact:

Hopewell Furnace National Historic Site, 2 Mark Bird Lane, Elverson, PA 19520; 610-582-8773

French Creek State Park, 843 Park Road, Elverson, PA 19520-9523; 610-582-9680

For information about local orienteering events, other area permanent courses, and club membership in eastern Pennsylvania, southern New Jersey, and Delaware, or for copies of this and other orienteering maps, please contact:

**Delaware Valley Orienteering Association (DVOA), 14 Lake Drive, Spring City, PA 19475, 610.792.0502, frankdvoa@aol.com, or visit our web site at www.dvoa.org.**

For a complete orienteering experience, please try one of our local weekend events. You can find the schedule at [www.dvoa.org](http://www.dvoa.org). Membership entitles you to reduced map fees at all of our events.

Congratulations and thank you for participating!

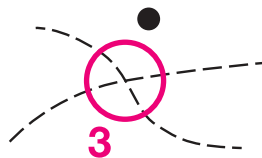
## INSTRUCTIONS

1. This permanent orienteering course offers two variations: a short and long course. Reference the course control sheets for course distances and total course climb. The course begins at Parking Area B, near the Park Office, indicated on the map with a triangle symbol. The course ends at the start location, indicated on the map with a double circle symbol.
2. Familiarize yourself with the map before you begin. You must decide between the short course and long courses when you reach control #7. Complete the A-B-C loop for the long course.

NOTE: Familiarization with the map relative to the fields, roads, and features shown is easier if you hold the map flat in front of you and rotate it until it is "oriented" to the terrain. Magnetic North lines will help if you have a compass, but you will find that the map is detailed enough that you may not need one on this course.

3. Set out to visit the controls in the sequence outlined on the map starting at the start triangle and proceeding towards control #1. Upon reaching each control, record, on the course control sheet provided, the letter code shown on the marker post placard (see illustrations to the right). You may also want to time yourself from start to finish.

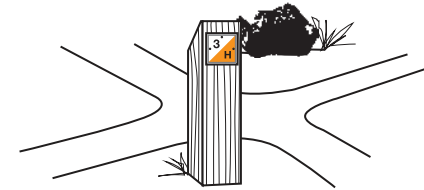
As an example, consider an imaginary control #3, marked on the map as shown below:



Referring to the map legend, you note that the control location, the point at the center of the circle, seems to be crossing between two paths. To confirm the terrain feature on which the control is located, look at the description and feature symbols provided on the sample control sheet shown below.

Permanent Orienteering Course Control Sheet						
Short Course		2.2 km distance (1.4 miles)			27m climb (90 feet)	
Control # / Letter Code		Control Descriptions			Control Descriptions (Text)	
▶		■				Start Triangle Building (Park Office)
1		/	/	Y		Road Junction
2		▲		1.7	○	Boulder, 1.7m Height, North Side
3		/	/	Y		Trail Junction

Suppose, after a fairly challenging and satisfying amount of navigation, you finally arrive at the vicinity of control #3. To your delight, you sight it precisely where it should be: at the foot path trail junction.



Take a closer look; you will notice the control number and letter code on the marker post placard.



By recording the letter code in the appropriate box on the control sheet, you provide proof of your visit to the control for later verification.

2	A		▲	
3	H		/	/

That's it! You're off to your next control, and so on to the finish.



## SAFETY NOTES

At the pace of a slow stroll, the course at French Creek Hopewell Lake can ordinarily be completed within 60-90 minutes. It is wise to take this into consideration, especially when setting off towards dusk.

On the remote chance you become hopelessly disoriented, make your way downhill to the edge of the lake, then follow the shoreline west toward the boat launch area. Remember that the sun rises in the east and sets in the west.

Some areas of the park may be hazardous. We told the Park Rangers we would remind you that you are responsible for you and your groups' safety.

